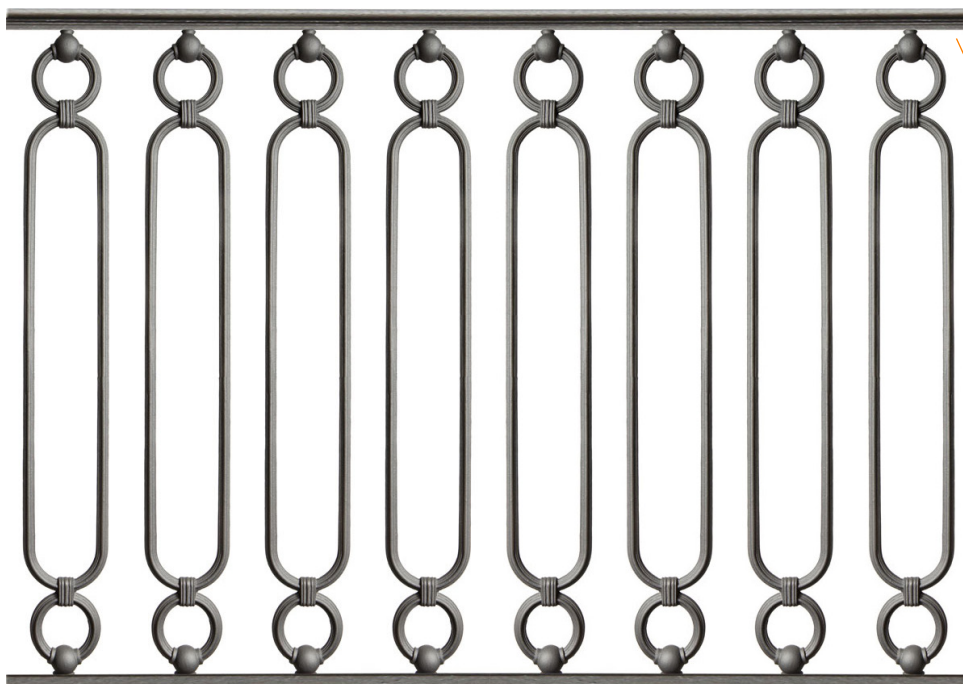


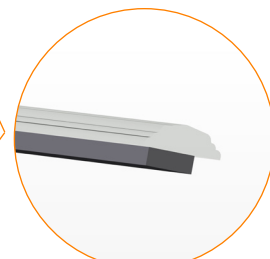
## PANNELLO COMPLETO CON ELEMENTO IN GHISA BR 07

Struttura modulare in acciaio zincato a caldo secondo norma UNI EN ISO 1461 con elementi decorativi in fusione di ghisa lamellare UNI EN GLJ 200 (**BG 07**), eventualmente alternati con paletti in acciaio (**BF 07**). Colore standard grigio antracite (**S**) o colorazioni RAL su richiesta.

### PANNELLO BG 07

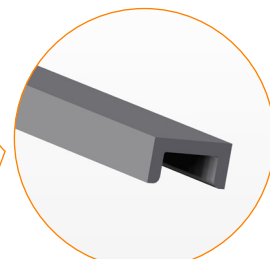
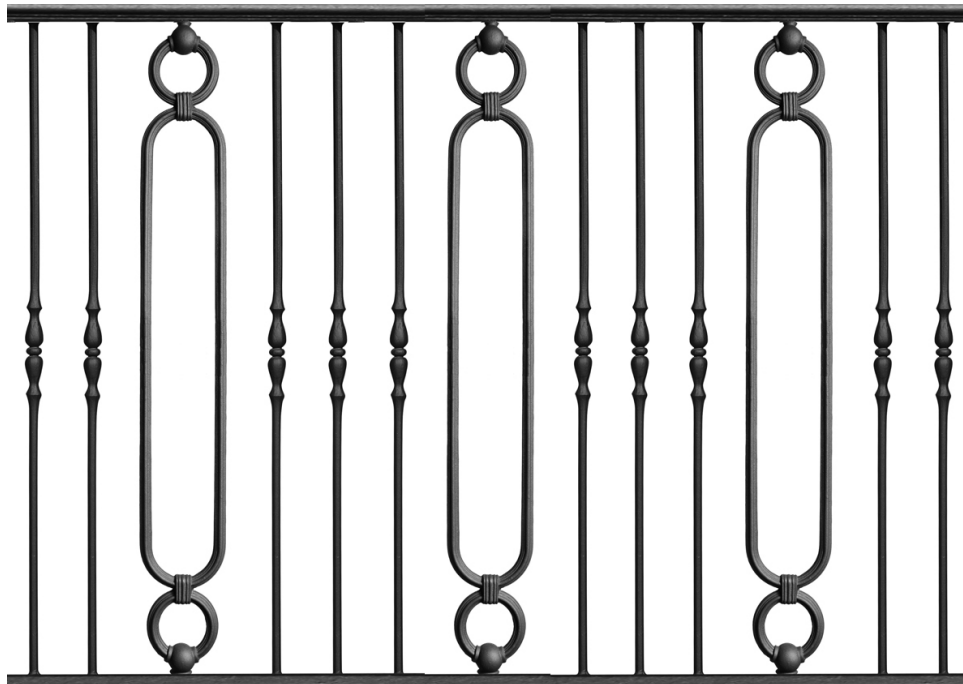


CORRIMANO SAGOMATO  
IN ACCIAIO  
50x15 mm.

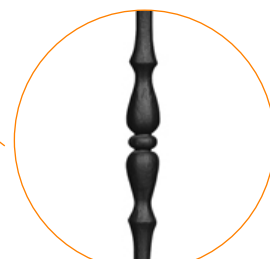


PIATTO  
IN ACCIAIO  
30x10 mm.

### PANNELLO BF 07



PROFILATO  
IN ACCIAIO A "U"  
40x20 mm.

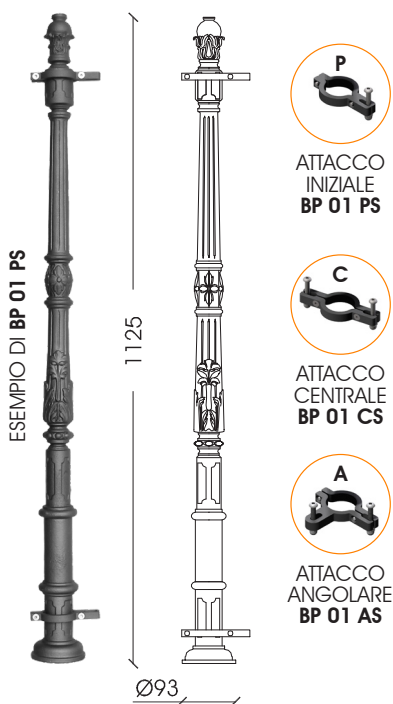


PALETTO IN ACCIAIO  
FORGIATO

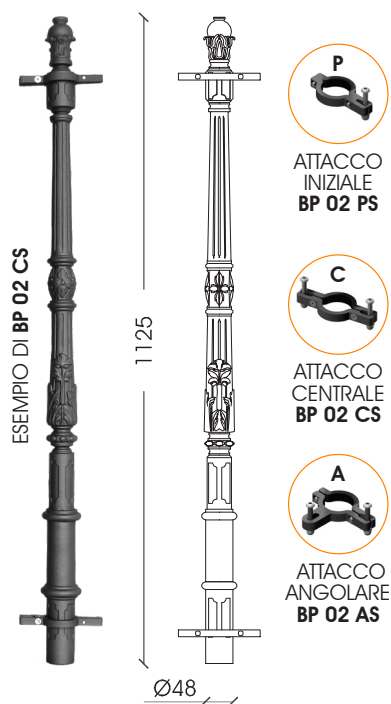
## ACCESSORI DI COMPLEMENTAMENTO

Paletti decorati in fusione di ghisa sferoidale UNI EN GJS 400 (**BP 01 - BP 02**).  
 Paletto liscio in acciaio S235JR (UNI EN 10025) completo di copriforo e decoro superiore (**BP 03**).  
 Attacchi idonei a diverse configurazioni: iniziale (**P**), centrale 180° (**C**), angolare 90° (**A**).  
 Colore standard grigio antracite (**S**) o colorazioni RAL su richiesta.

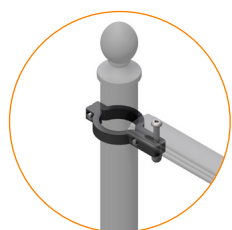
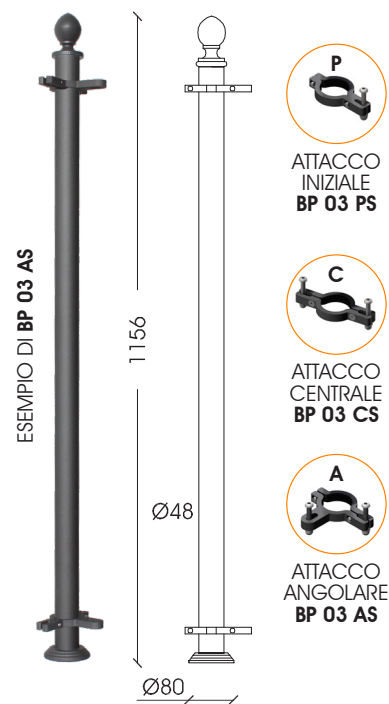
PALETTO IN GHISA **BP 01**



PALETTO IN GHISA **BP 02**



PALETTO IN ACCIAIO **BP 03**



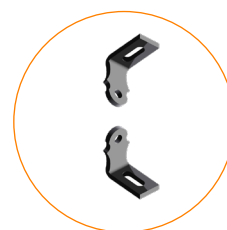
ATTACCO INIZIALE **P**



ATTACCO CENTRALE **C**



ATTACCO ANGOLARE **A**



STAFFE A MURO **BA.05 VS**

