

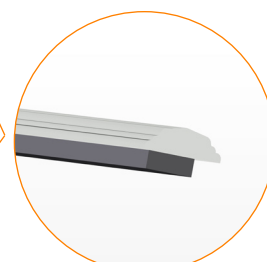
## COMPLETE PANEL WITH BR 21 CAST IRON ELEMENT

Modular structure made in hot galvanized steel according to UNI EN ISO 1461 with decorative elements in lamellar cast iron UNI EN-GLJ-200 (**BG 21**) or alternate with steel stakes (**BF 22**).  
Standard anthracite grey color (**S**) or RAL color on request.

### PANEL BG 21

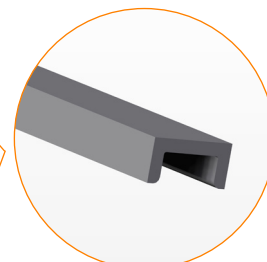
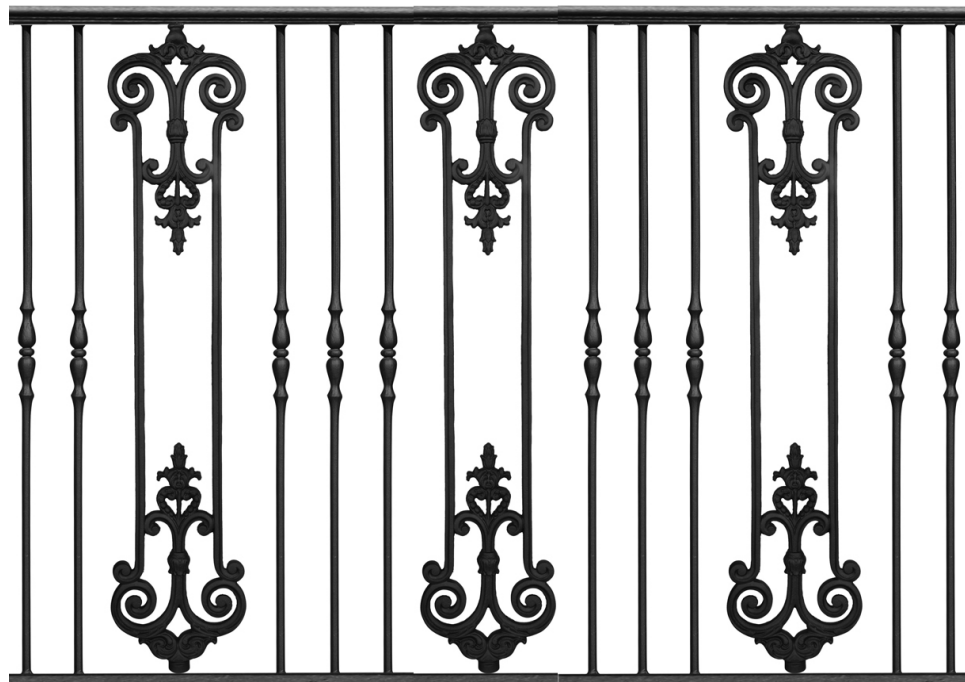


STEEL SHAPED  
HANDRAIL  
50x15 mm.

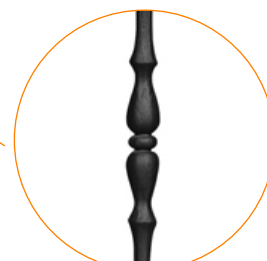


FLAT STEEL  
PROFILE  
30x10 mm.

### PANEL BF 21



STEEL "U"  
PROFILE  
40x20 mm.



FORGED STEEL  
STAKE

## COMPLETION ACCESSORIES

Spheroidal cast iron top posts according to UNI EN GJS 400 (**BP 01 - BP 02**). Simple steel top post S235JR (UNI EN 10025) complete of cover for hole and upper decoration. Top posts are provided of fixing brackets suitable for different layouts: starting one (**P**), central one 180° (**C**), corner one 90° (**A**).  
Standard anthracite grey color (**S**) or RAL color on request.

