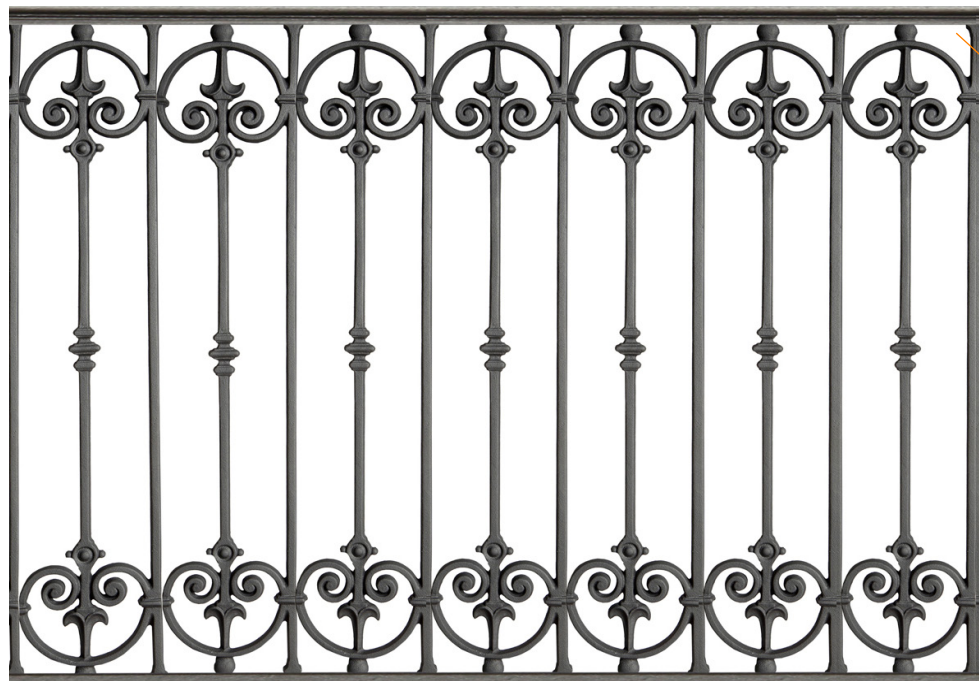


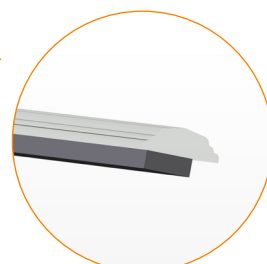
COMPLETE PANEL WITH BR 14 CAST IRON ELEMENT

Modular structure made in hot galvanized steel according to UNI EN ISO 1461 with decorative elements in lamellar cast iron UNI EN GLJ 200 (**BG 14**).
Standard anthracite grey color (**S**) or RAL color on request.

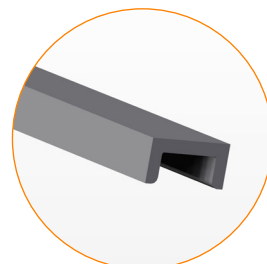
PANEL BG 14



STEEL SHAPED
HANDRAIL
50x15 mm.



FLAT STEEL
PROFILE
30x10 mm.



STEEL "U"
PROFILE
40x20 mm.

COMPLETION ACCESSORIES

Spheroidal cast iron top posts according to UNI EN GJS 400 (**BP 01 - BP 02**). Simple steel top post S235JR (UNI EN 10025) complete of cover for hole and upper decoration. Top posts are provided of fixing brackets suitable for different layouts: starting one (**P**), central one 180° (**C**), corner one 90° (**A**).
Standard anthracite grey color (**S**) or RAL color on request.

