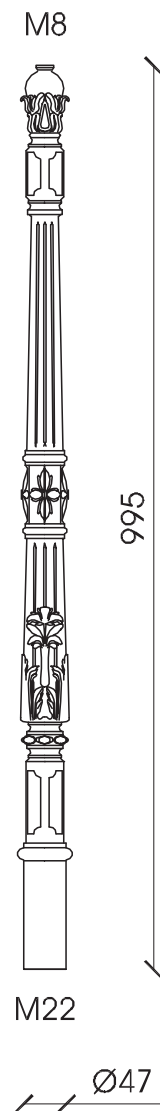


BC 05

Top post for vertical fixing (**V**), supplied with M8 upper threaded hole and M12 lower threaded hole. Surface protection: sandblasting, one component zinc coat by immersion, two-component zinc phosphate primer coat, two bicomponent finishing standard gray paint (**S**) or with RAL colors on request.



BC 05 VS

Vertical fixing top post

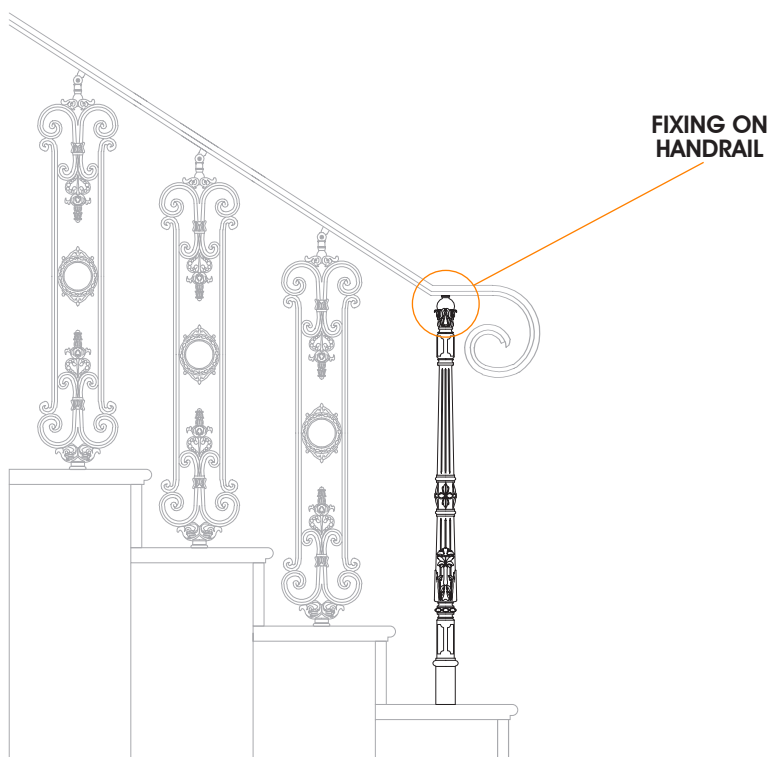
MATERIAL

Cast iron casting GLJ-200 (UNI EN 1561)

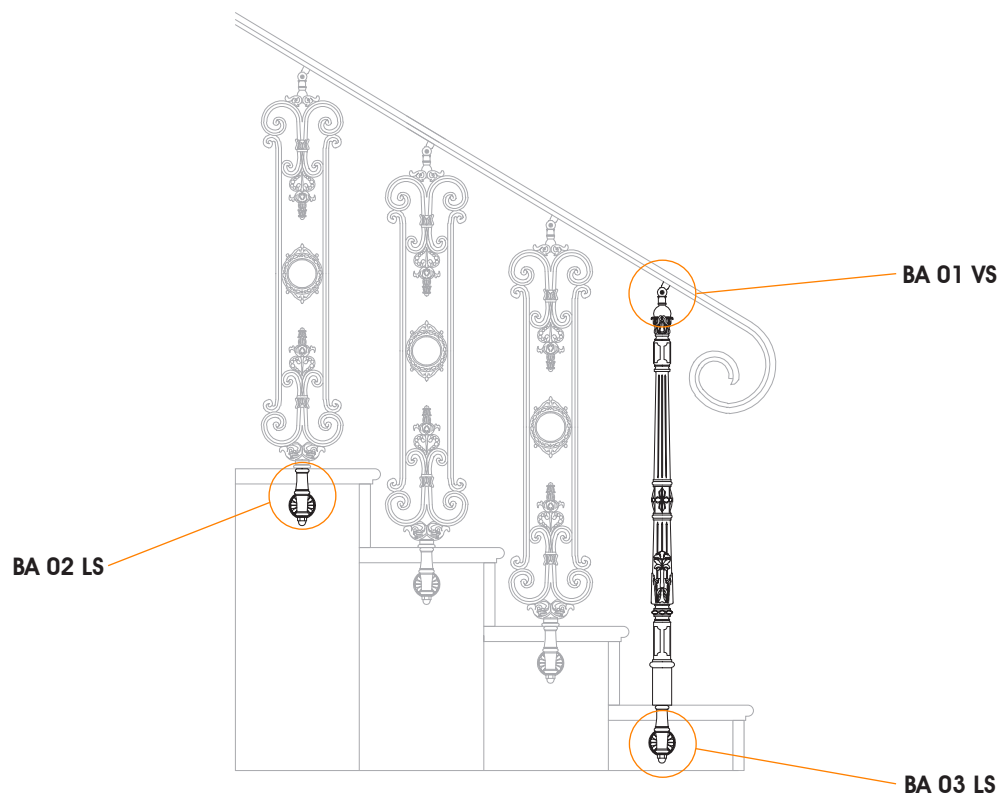
WEIGHT

Kg. 8

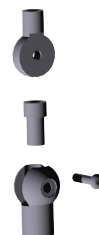
INSTALLATION EXAMPLES



BC 05 V



ACCESSORIES



BA 01 VS
UPPER FIXING



BA 02 LS
LATERAL FIXING



BA 03 LS
COVER FOR HOLE
ROSETTE