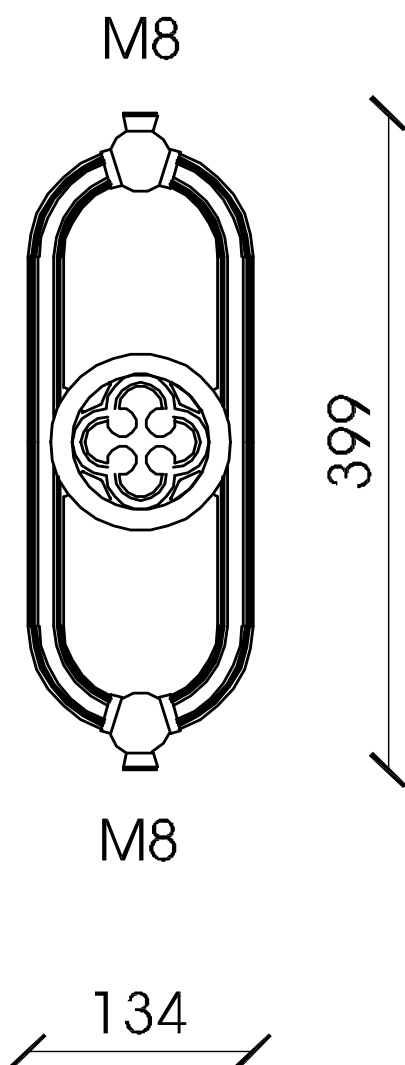


BR 08

Cast iron element for vertical (V), supplied with M8 upper and lower threaded hole.
 Surface protection: sandblasting, one component zinc coat by immersion, two-component zinc phosphate primer coat, two bicomponent finishing standard gray paint (S) or with RAL colors on request.



BR 08 VS

Vertical fixing element

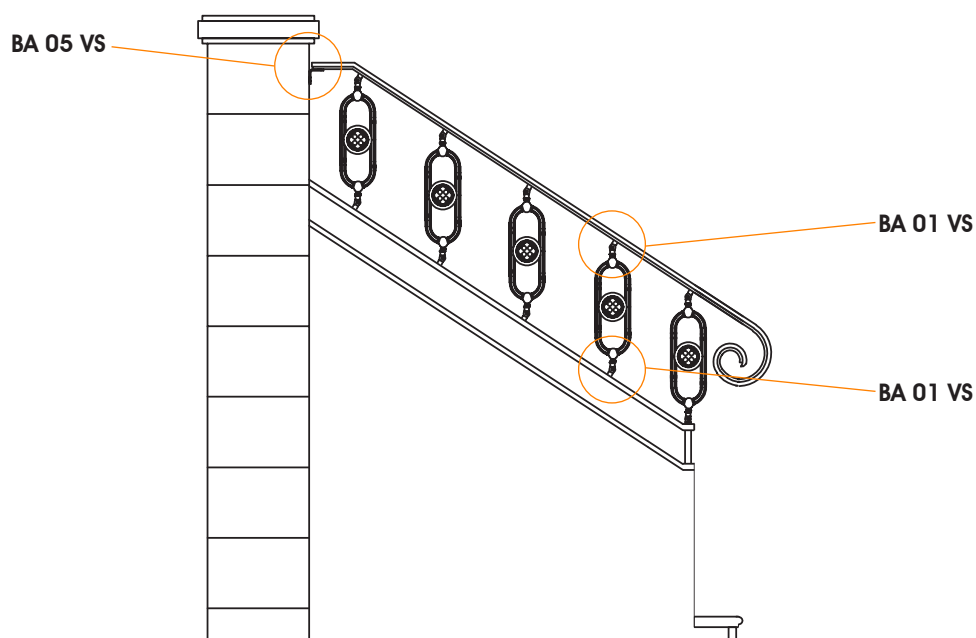
MATERIAL

Cast iron casting GLJ-200 (UNI EN 1561)

WEIGHT

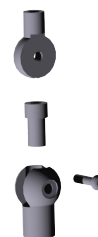
Kg. 5,5

INSTALLATION EXAMPLES



STEEL PROFILE VERTICAL FIXING **BR 08 V**

ACCESSORIES



BA 01 VS
UPPER FIXING



BA 05 VS
WALL FIXING