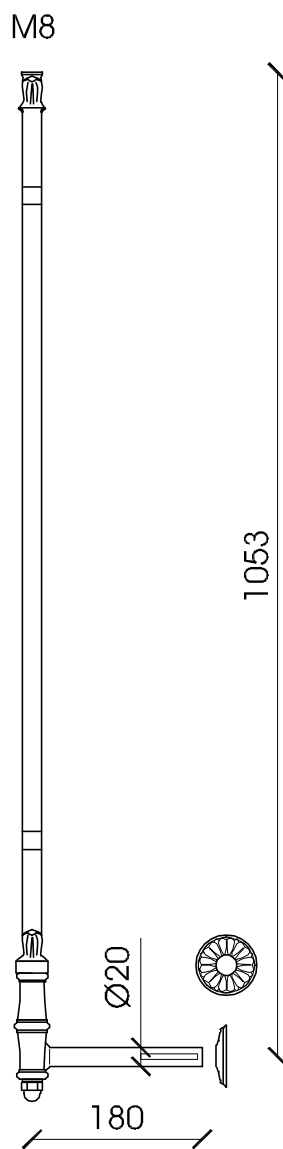
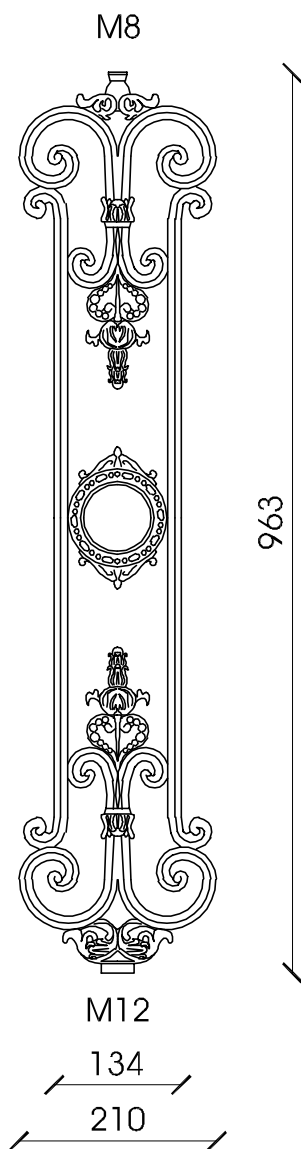


## BR 19

Cast iron element for vertical (V) or lateral (L) fixing, supplied with M8 upper threaded hole and M12 lower threaded hole. Surface protection: sandblasting, one component zinc coat by immersion, two-component zinc phosphate primer coat, two bicomponent finishing standard gray paint (S) or with RAL colors on request.



### BR 19 VS

Vertical fixing element

#### MATERIAL

Cast iron casting GLJ-200 (UNI EN 1561)

#### WEIGHT

Kg. 6,2

### BR 19 LS

Lateral fixing element

#### MATERIAL

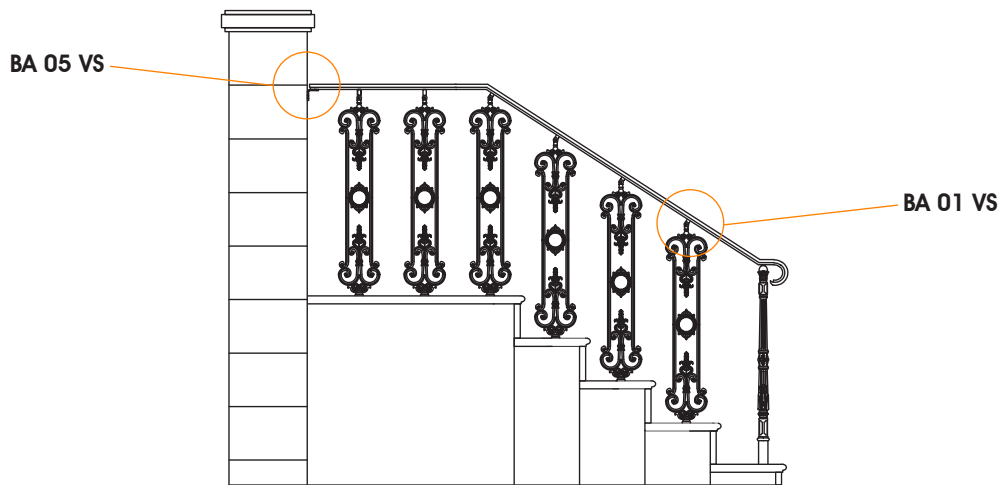
Cast iron casting GLJ-200 (UNI EN 1561)

Spheroidal cast iron lateral fixing (UNI EN 1561)  
cast aluminium cover hole rosette

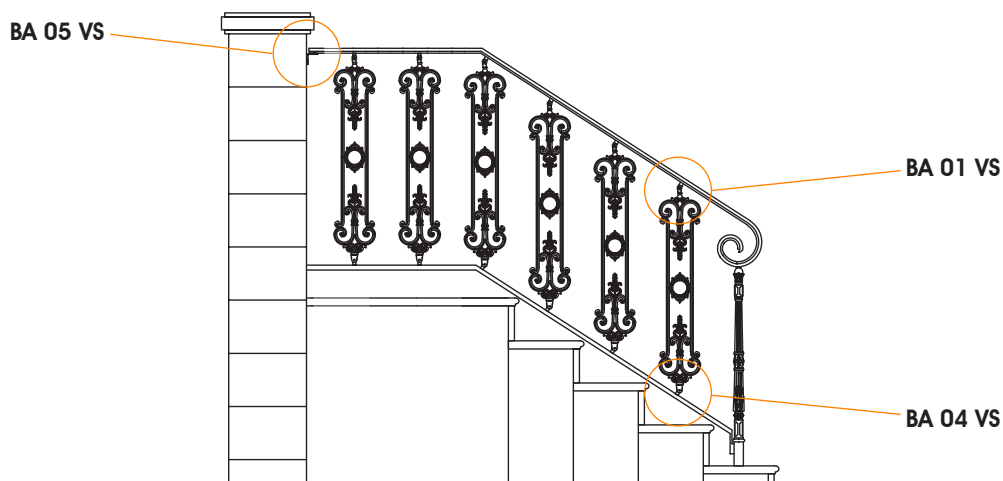
#### WEIGHT

Kg. 6,9

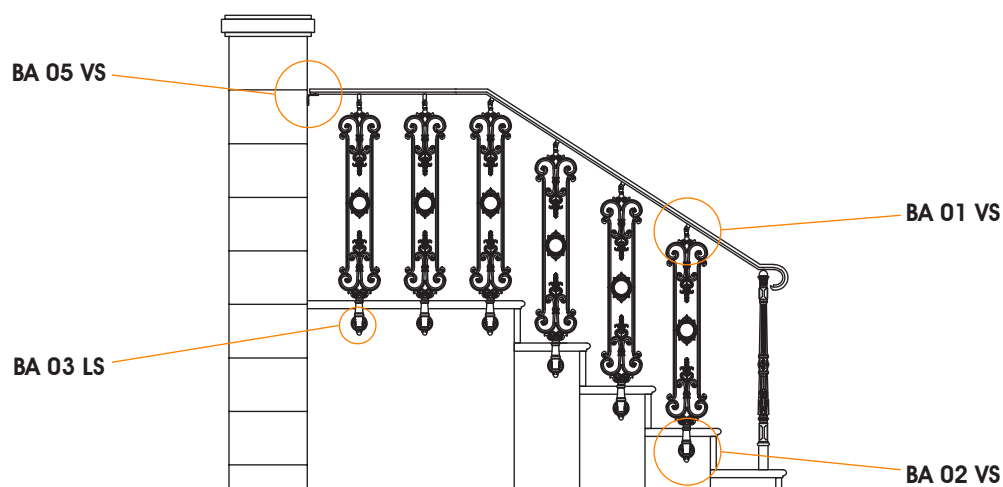
## INSTALLATION EXAMPLES



FLOOR VERTICAL FIXING **BR 19 V**

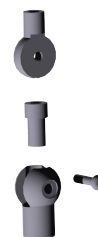


STEEL PROFILE VERTICAL FIXING **BR 19 V**



LATERAL FIXING **BR 19 L**

## ACCESSORIES



**BA 01 VS**  
UPPER FIXING



**BA 04 VS**  
LOWER FIXING



**BA 05 VS**  
WALL FIXING



**BA 02 LS**  
LATERAL FIXING



**BA 03 LS**  
COVER FOR HOLE  
ROSETTE