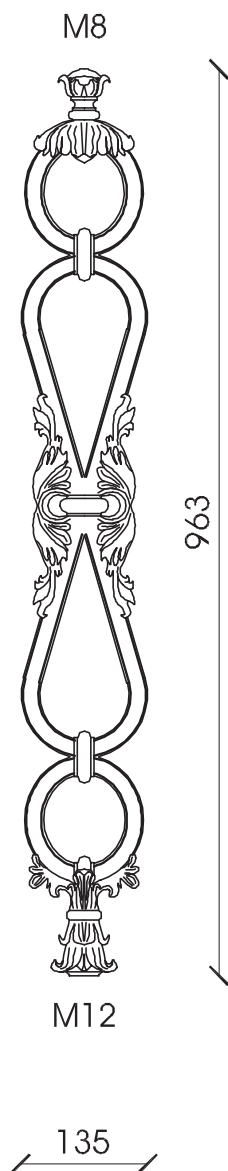


## BR 01

Cast iron element for vertical (V) or lateral (L) fixing, supplied with M8 upper threaded hole and M12 lower threaded hole. Surface protection: sandblasting, one component zinc coat by immersion, two-component zinc phosphate primer coat, two bicomponent finishing standard gray paint (S) or with RAL colors on request.



### BR 01 VS

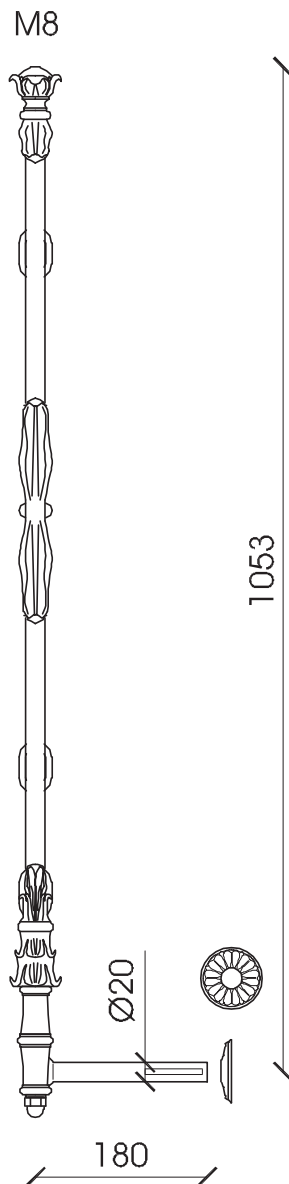
Vertical fixing element

**MATERIAL**

Cast iron casting GLJ-200 (UNI EN 1561)

**WEIGHT**

Kg. 6,7



### BR 01 LS

Lateral fixing element

**MATERIAL**

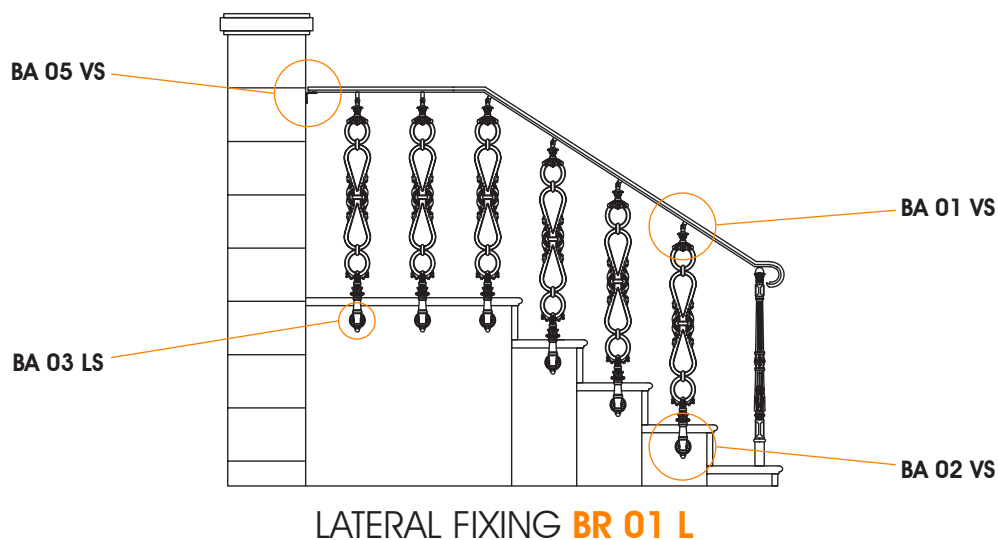
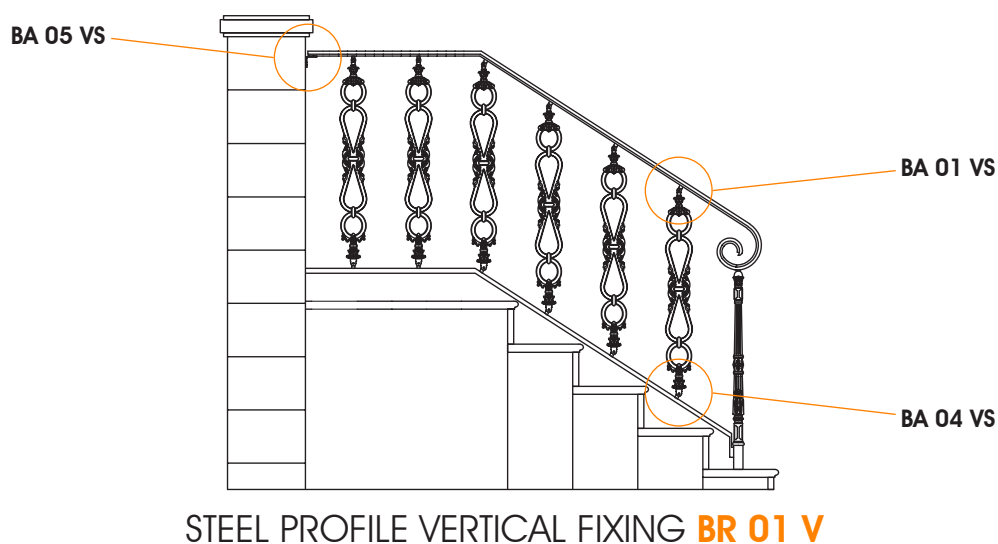
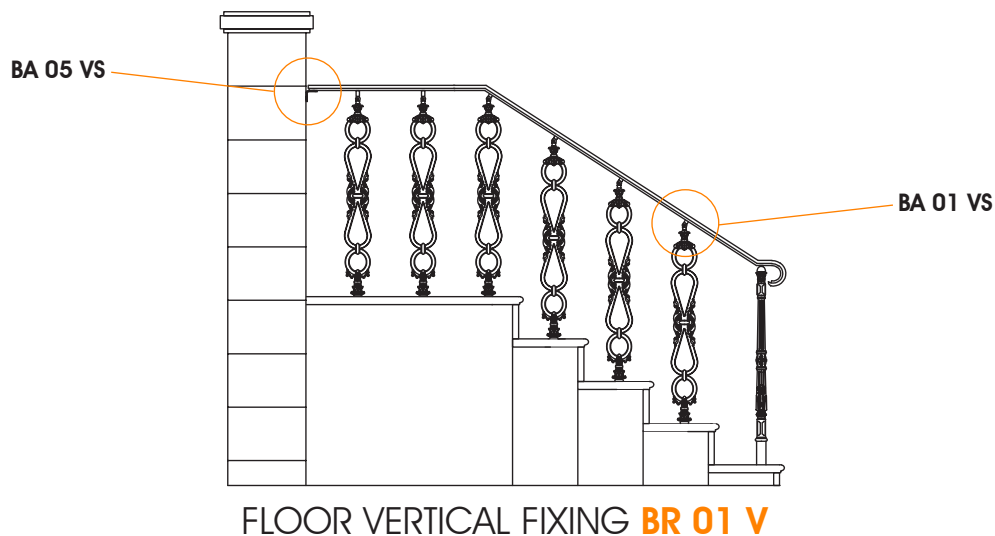
Cast iron casting GLJ-200 (UNI EN 1561)

Spheroidal cast iron lateral fixing (UNI EN 1561)  
cast aluminium cover hole rosette

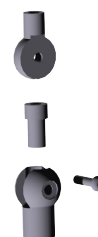
**WEIGHT**

Kg. 7,4

## INSTALLATION EXAMPLES



## ACCESSORIES



**BA 01 VS**  
UPPER FIXING



**BA 04 VS**  
LOWER FIXING



**BA 05 VS**  
WALL FIXING



**BA 02 LS**  
LATERAL FIXING



**BA 03 LS**  
COVER FOR HOLE  
ROSETTE