

LPG 099 POLE - TECHNICAL DATA

1:20 SCALE

DESCRIPTION

STRUCTURE

S235JR steel core.
(UNI EN 10025) Ø60 mm hot dip galvanized
according to standards (UNI EN ISO 1461).

Flange cover in cast iron GLJ-200
(UNI EN 1561) Ø260 mm.

Decorative leaf in cast iron.
GLJ-200 (UNI EN 1561) Ø160 mm.

Threaded $\frac{3}{4}$ end sleeve made of steel
cold-dip galvanized.

Stainless steel hardware.

For details on ground anchorage, refer to the
technical drawing.

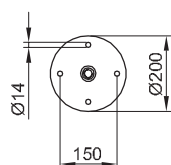
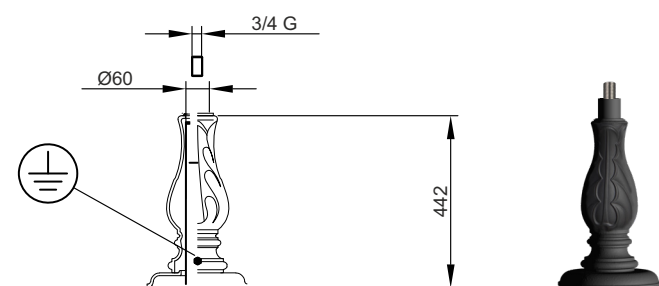
PAINTING CYCLE

STEEL

Coat of two-component zinc phosphate
primer and two coats of finish with two-com-
ponent standard gray (S) paint. RAL colors on
request.

CAST IRON

Sandblasting, immersion coat of
zinc monocomponent, two-component zinc
phosphate primer coat, two coats of finishing
with standard gray two-component (S). RAL
colors on request.



LPG 099 F
Pole with Flange