

LPC 099 POLE - TECHNICAL DATA

1:20 SCALE

DESCRIPTION

STRUCTURE

S235JR steel core.
(UNI EN 10025) Ø76 mm hot-dip galvanized
according to standards (UNI EN ISO 1461).

Flange cover in cast iron GLJ-200.
(UNI EN 1561) Ø260 mm.

Cast iron fitting
GLJ-200 (UNI EN 1561) Ø114-76 mm.

Cast aluminum fitting
(UNI EN 1706) Ø76-60 mm.

Threaded ¾ end sleeve in steel.
cold-dip galvanized.

Stainless steel hardware.

For details on ground anchorage, refer to the
technical drawing.

PAINTING CYCLE

STEEL

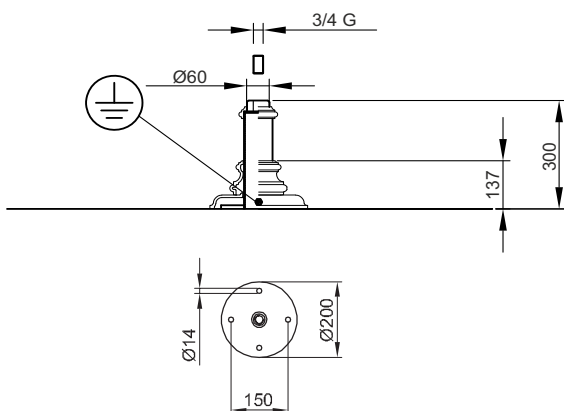
Coat of two-component zinc phosphate
primer and two coats of finish with
two-component standard gray (S) paint.
RAL colors on request.

CAST IRON

Sandblasting, immersion coat of
zinc monocomponent, two-component zinc
phosphate primer coat, two coats of finishing
with standard gray two-component (S).
RAL colors on request.

ALUMINIUM

Pickling and washing with water
demineralized, nanotechnological process,
drying at 160°C. Polyester powder primer coat
and oven curing at 200°C.
Finishing coat with two-component varnish
standard gray color (S).
RAL colors on request.



LPC 099 F
Pole with Flange